

Why Easy Eyeson?

A user experience you will love!

✓ Full Accountability

Pawnshop software transactions and audio embedded in the video footage from 4K cameras, providing full accountability for everything that happens at your counter. See, listen, know it all!

✓ Self Management

My Eyeson first year subscription with POS integration, people counting, e-Buzz app, and face recognition cloud portal.

✓ Integrated video system

That exceeds standards in the industry. Easily expandable to all cameras in your store.

✓ Highest ROI in security technology

Lowest long-term cost of ownership. Our NVRs last an average of 8-10 years.

✓ Fastest search and video retrieval

✓ Affordable price to secure your business



**DYI OR HIRE US FOR
A WORRY-FREE
INSTALLATION**

Contact Us Today!

☎ +1 305-808-3344

✉ info@eyeson.biz

🌐 www.eyeson.biz/site/support/



**EASY
EYESON
QUICK SETUP
GUIDE**

www.eyeson.biz

WHAT'S INCLUDED?

Make your security smarter with Easy Eyeson

Easy Setup with our starter kit!



- ✓ (1) Eyeson 16-port managed PoE Switch.



- ✓ (1) Eyeson Server
- ✓ (1) 18TB HDD Hard Drive



- ✓ (1) AI Face Recognition Camera



- ✓ (7) Eyeson 4K IP cameras with embedded microphone



EASY EYESON QUICK SETUP GUIDE

www.eyeson.biz

NETWORK MAP

1



1

✓ Your Router (ISP) Internet Provider

2



✓ Your Switch



3



✓ Eyeson Smart Switch

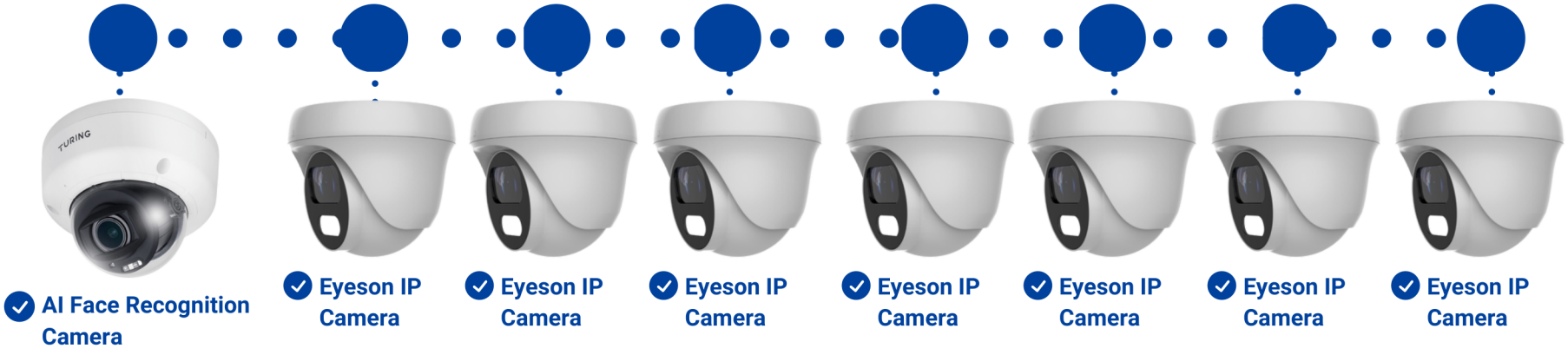


5

4



✓ Eyeson Server



✓ AI Face Recognition Camera

✓ Eyeson IP Camera

✓ Eyeson IP Camera

✓ Eyeson IP Camera

✓ Eyeson IP Camera

✓ Eyeson IP Camera

✓ Eyeson IP Camera

✓ Eyeson IP Camera

*All brands and models may vary accordingly to availability.

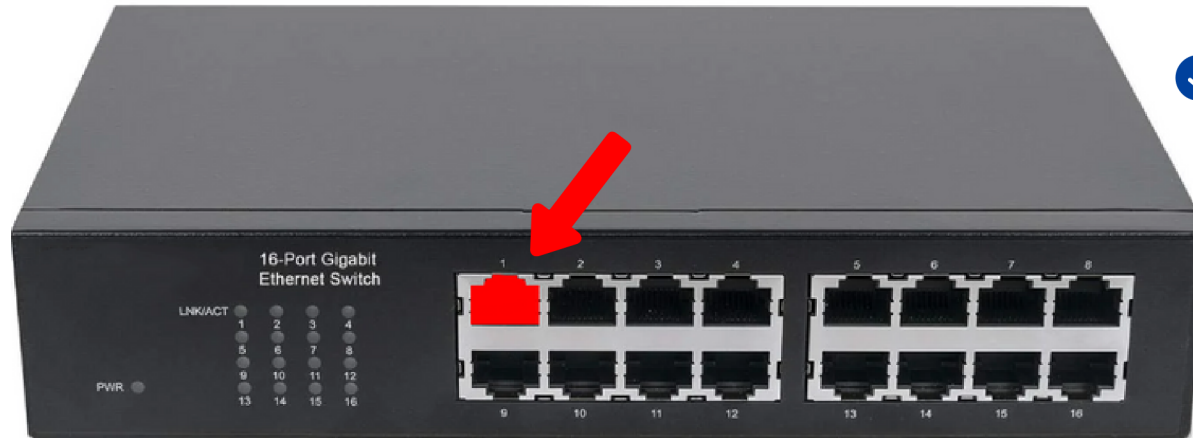


SWITCH CONNECTION GUIDE

2

- Plug one connector point of a CAT6 Ethernet cable to **PORT 1** at Eyeson Switch.
- Plug the other cable connector to any available port at your switch or router with Internet access.

1



✓ Eyeson Smart Switch

(Switch brand and model may vary accordingly to availability)

2



✓ CAT6 Cable (Not Included)

3



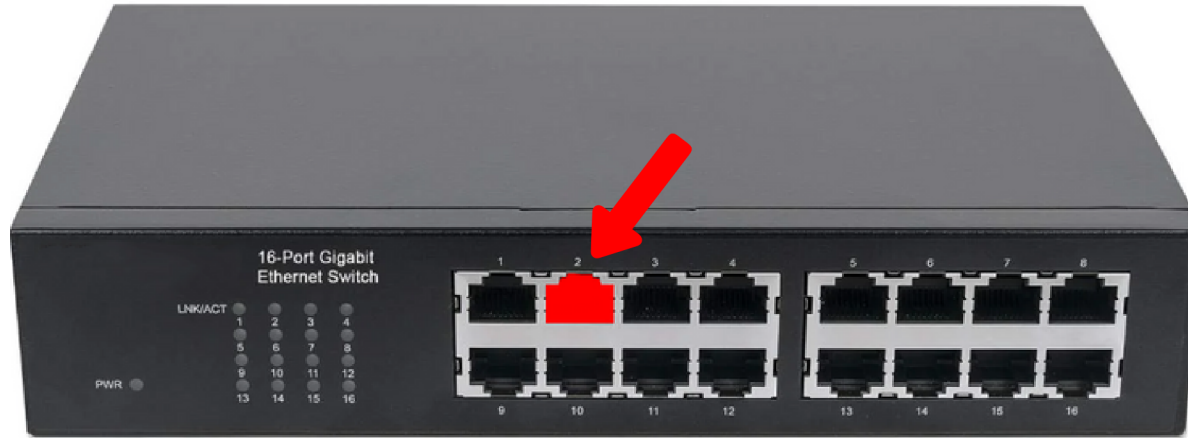
✓ Your Switch

SERVER CONNECTION GUIDE

3

- Plug one connector point of a CAT6 Ethernet cable to **PORT 2** at Eyeson Switch.
- Plug the other cable connector to the Ethernet port at the back of your Eyeson Server, circled in red below.

1



✓ Eyeson Smart Switch

(Switch brand and model may vary accordingly to availability)

2



✓ CAT6 Cable (Not Included)

3



✓ Server Ethernet Port

✓ Before installing your cameras

- Make sure the Eyeson Server is properly connected to the Eyeson Smart Switch.
- Plug the Switch and Server to the power outlet and turn both devices ON.
- Make sure the Eyeson Server is online.
- Send us an email to: techsupport@eyeson.biz in order to complete your software setup remotely, before mounting all cameras.

1



✓ Server Ethernet Port

Email us to:
TECHSUPPORT@EYESON.BIZ

CAMERA CONNECTION GUIDE

5

- Plug your new cameras using an CAT6 Ethernet cable to **PORTS 3, 4, 5, 6, 7, 8, 9** and **10** at Eyeson Switch.
- Please follow the illustrations below.

1



✓ Eyeson Smart Switch

(Switch brand and model may vary accordingly to availability)

(7) Eyeson 4K 8 Megapixels, Day/Night IP cameras with wide angle lenses and embedded microphone



2

✓ CAT5e Cable (Not included - One cable per camera is required)

3

✓ AI Face Recognition Camera

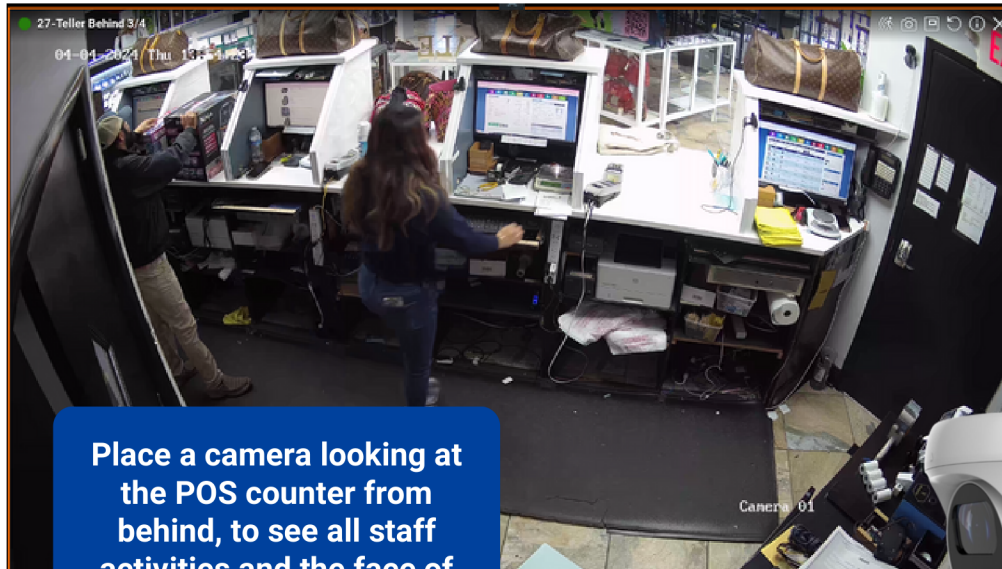
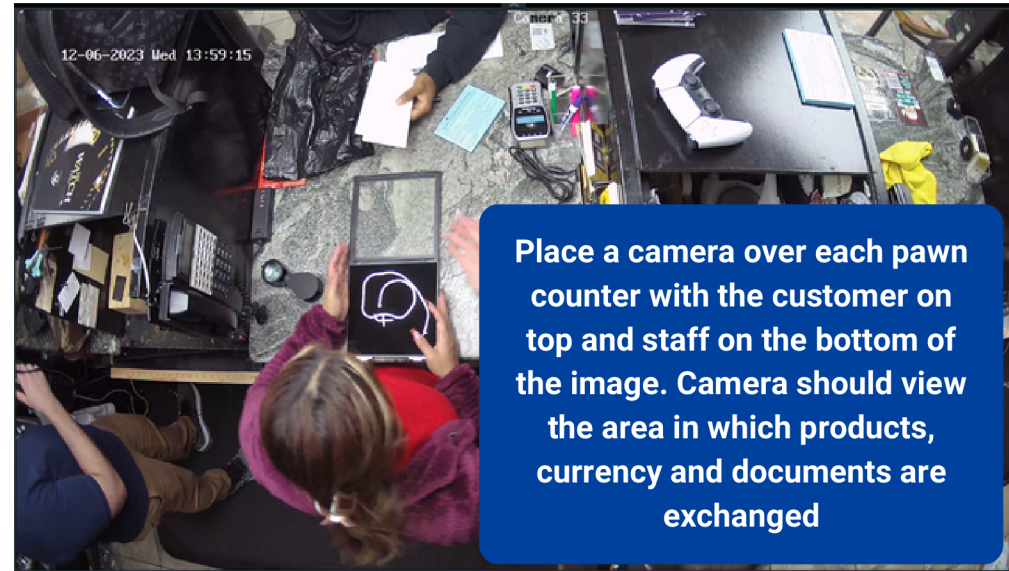


✓ Eyeson IP Camera ✓ Eyeson IP Camera ✓ Eyeson IP Camera ✓ Eyeson IP Camera ✓ Eyeson IP Camera ✓ Eyeson IP Camera ✓ Eyeson IP Camera

CAMERA CONNECTION GUIDE

6

- Make sure you find the most appropriate location to mount all of your seven (7) Eyeson 4K 8 Megapixels Day/Night IP cameras, with wide angle lenses and embedded microphone.
- Please follow the illustrations below.

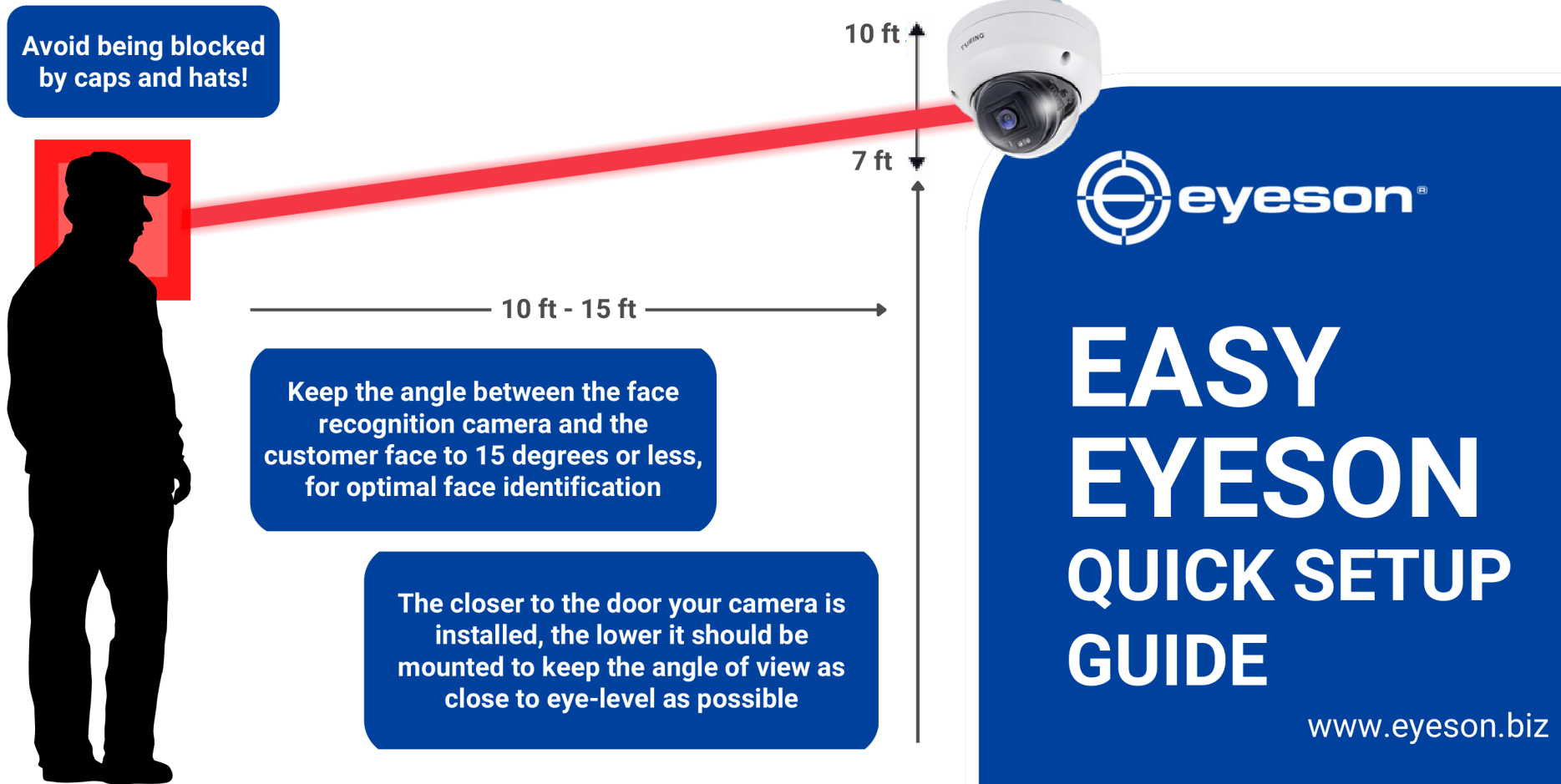


✓ Eyeson IP Camera



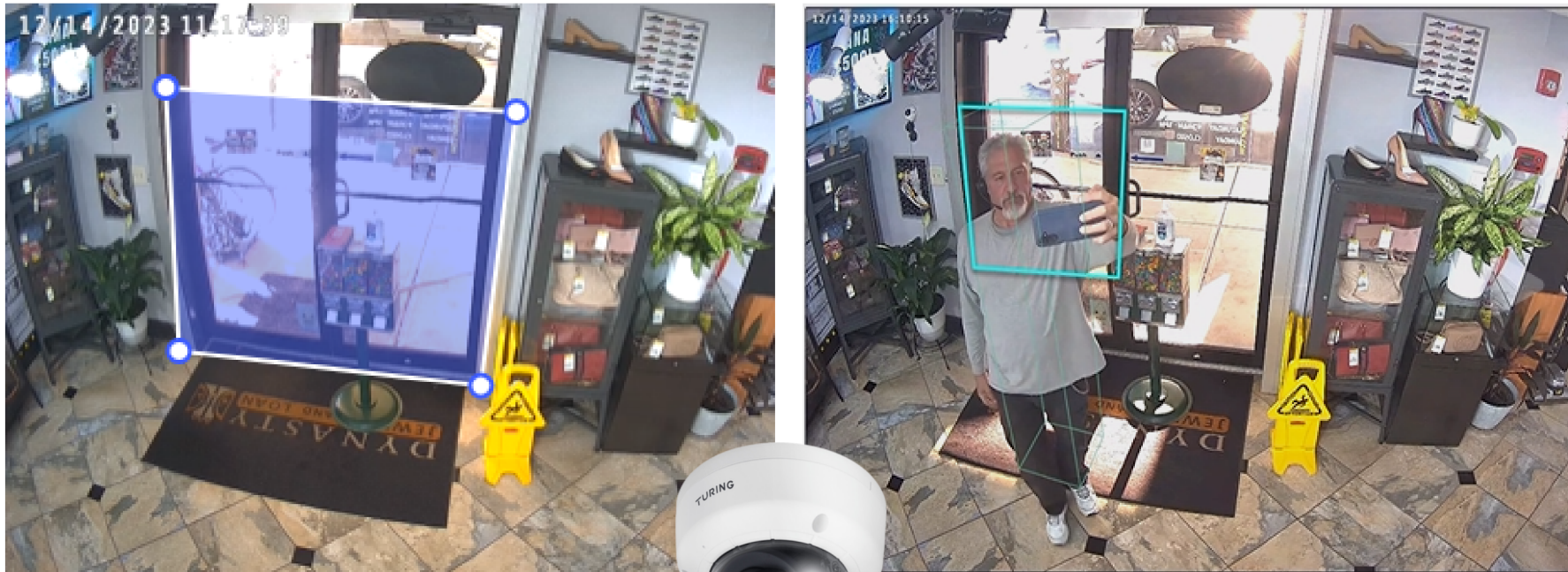
✓ Get the most out of your face recognition camera!

- Your AI Face Recognition camera should be pointing straight to your entry door.
- Mount the AI Face Recognition camera keeping the angle of view as close to eye-level as possible, to improve face detection.



✓ Get the most out of your face recognition camera!

- Make sure you find the most appropriate location to mount your AI Face Recognition camera.
- The closer to the door the camera is installed, the lower it should be mounted to keep the angle of view as close to eye-level as possible.
- Please see these examples below.



✓ AI Face Recognition Camera

✓ **After completing all previous steps, you are now ready to get your system LIVE!**

- Call us at **305-808-3344** and ask to speak with an Eyeson IT Representative to conclude the deployment remotely.
- One of our technicians will connect to the server remotely to install all softwares and services needed, port your current cameras to your brand new camera system (optional) and schedule your training.



EASY EYESON QUICK SETUP GUIDE